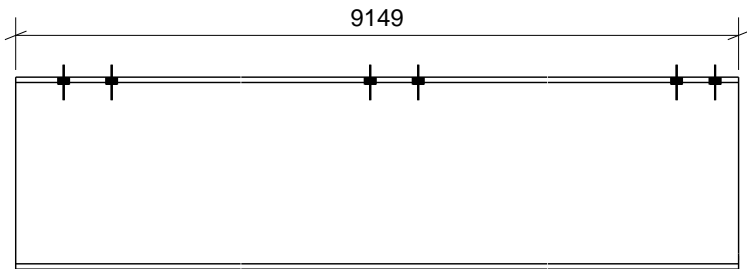
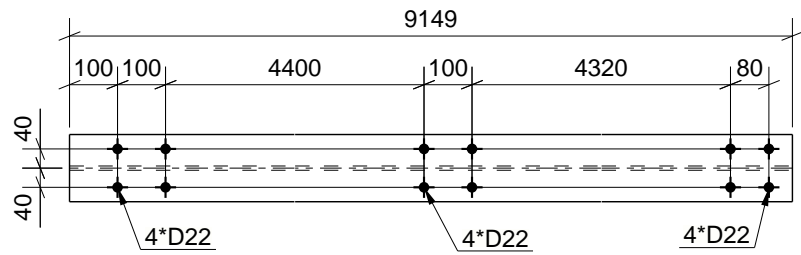
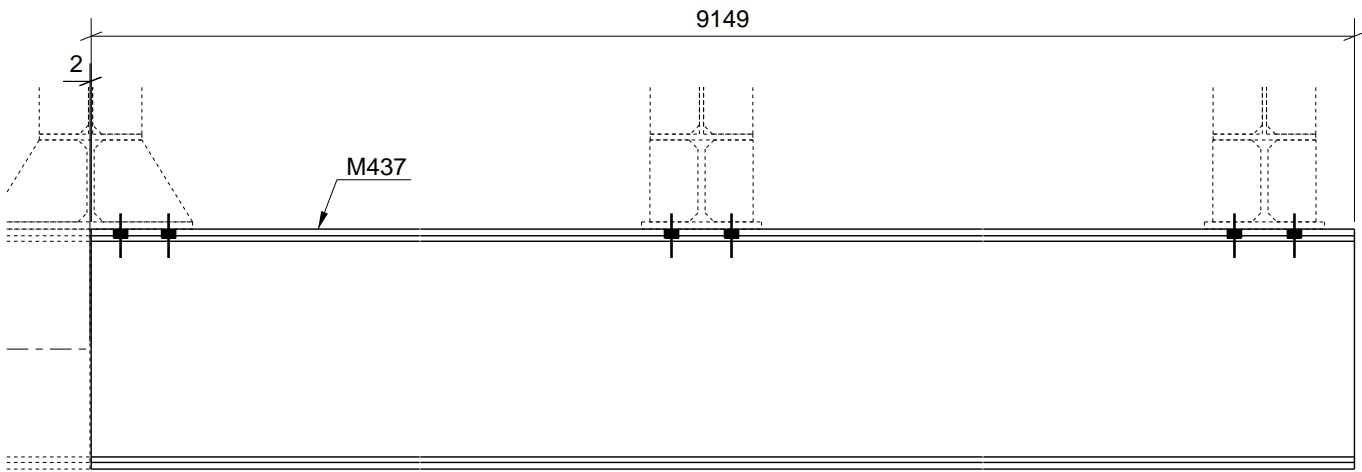
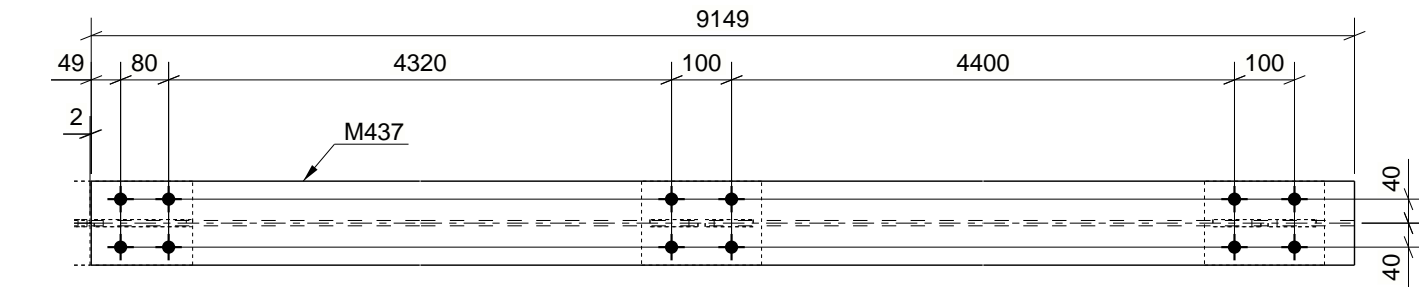


GRID LOCATION		
MR10	11-12/B-C	+27.800
MR10	11-12/C-D	+27.800



M437

BHEL-INDUSTRIAL SYSTEMS GROUP (CIVIL)

1) ☒ KEPT FOR INFORMATION.

SITE /CONTRACTOR TO ENSURE THE COMPLIANCE OF ALL PREVIOUS COMMENTS AND PROCEED FOR FABRICATION

2) ☐ INCORPORATE ALL COMMENTS,RESUBMIT THE REVISED DRAWINGS

BHEL'S APPROVAL WILL NOT ABSOLVE CONTRACTOR FROM HIS RESPONSIBILITY TOWARDS CORRECTNESS OF DRAWING .CONTRACTOR SHALL BEAR THE TOTAL RESPONSIBILITY FOR MISMATCHES ,ERROR IN THE DRAWINGS

NAME

PRASANTH KUMAR RAI KG

SIGNATURE

---sd---

DATE

Digitally signed
by MANAB
KUMAR MONDAL
DN: cn=MANAB
KUMAR MONDAL,
o=ISG, ou=BHEL,
email=man@bhel
.in, c=IN
Date: 2022.09.26
10:09:14 +05'30'

- NOTES:-
- ALL DIMENSIONS ARE IN mm. & LEVELS ARE IN MTR.
 - ALL MEMBERS AND GUSSET PLATES TO BE CUT AFTER FULL SCALE SHOP LAYOUT BEFORE FABRICATION.
 - ALL WELDS ARE 6mm. THICK U.N.O
 - PERMANENT BOLT SHOWN THUS.....
 - SURFACE TO BE FINISHED ARE SHOWN THUS ----
 - 17.5Ø HOLES FOR M16 BOLTS FOR L 50x50x6
 - FOR MARKING REFER DRAWING NO. BCC-BHEL-JAGD-GSS-E01 TO E14
 - THIS DRAWING HAS BEEN PREPARED BASED ON DESIGN DRG. NO. 9585-001-109-PVC-C-448

2 NO. MONORAIL REQD. AS DRAWN MKD MR10

BILL OF MATERIALS								
ASSEMBLY MK'D : MR10					ASSY QTY : 2			
Item Mark	Qty./ Assembly	Profile Size	Wt./Meter	Length	Wt./Item	Total Qty.	Total Wt.	Material /Remarks
M437	1	ISMB400	61.50	9149	551	2	1102.22	E250
NET TOTAL WEIGHT							1102.22	

BOLT LIST				
ASSEMBLY MARK	FIELD BOLT	LENGTH	TOTAL QTY	REMARKS
MR10	20 DIA HSFG-XOX	60	24	Bolt+Nut+Washer
TOTAL			24	

SUMMARY OF STEEL			
SR. No.	DESCRIPTION	TOTAL WT.	Remarks
1	ISMB400	1102.22	
TOTAL IN KGS.		1102.22	

0	ISSUED FOR APPROVAL	15.09.2022	BCC	AC	BCC	
REV.	DESCRIPTION	DATE	DRN.	CHD.	APPD.	
CUSTOMER		<div><div>एनटीपीसी</div><div>NTPC</div><div>NTPC LIMITED</div></div>				
PROJECT:		3x800MW PATRATU SUPER THERMAL POWER PROJECT, PATRATU				
EPC CONTRACTOR		<div><div>भारत भारी बिजली</div><div>BHEL</div><div>BHARAT HEAVY ELECTRICALS LTD.</div></div>				
SUB CONTRACTOR		<div><div>भारत भारी बिजली</div><div>BHEL</div><div>BHARAT HEAVY ELECTRICALS LTD.</div><div>JAGDISHPUR</div></div>				
CONSULTANT		<div><div>BCC</div><div>BHARAT CONSTRUCTION COMPANY</div><div>KOLKATA - RANCHI - DELHI</div></div>				
DSN.	NAME	DATE	TITLE GYPSUM STORAGE SHED DETAIL OF MONORAIL MKD AS MR10			
DRN.	BCC	15.09.2022				
CHD.	AC	15.09.2022				
APPD.	BCC	15.09.2022				
DRAWING NO.: BCC-BHEL-JAGD-GSS-MR10			REV: 0			